

Rowe School: Map 30 Lot 5

This lot consists of 14 acres of School Street. A portion of the 14 acre parcel is used and dedicated to Rowe School and associated parking, playgrounds and lawn area. The remaining portions are dedicated to public tennis courts, baseball field, Royal River Park and riverfront pathway as well as the Beth Condon Memorial Pathway and any utility road and utility easements at School Street, Route One. In addition a public pedestrian easement running between 261 and 275 Main Street to Rowe School both serves and burdens the Rowe School lot. The lot should be divided formally between the lands dedicated for general public use and those dedicated for school purposes. See attached map with division sketch.

Portland Street Access: (Map 31 Lot 65)

A strip of land 100 ft wide (2.1 acres) running from Portland Street to the Yarmouth High School Parking lot includes a public access roadway which has not been accepted as a public highway and functions as a main point of entry to the Yarmouth High School and athletic facilities. The 100 ft strip and roadway shall be deemed a necessary part of the school grounds. The Town retains access, utility and storm water and travel rights. See attached map; aerial photo taken prior to construction of roadway and high school improvements, turf field under construction.

Yarmouth High School and athletic facilities : (Map 36 Lot 2, 37/25, 31/53)

This property 54.8 acre parcel is comprised of numerous parcels accumulated and assimilated into a single parcel and purpose over approximately five decades. It includes the high school building, tennis courts, softball field, field hockey/soccer field, baseball field parking lots and drives, as well as the synthetic turf sports field and track, and associated practice field, wooded buffer strip and trails. All portions of the parcel are dedicated for school purposes. The town retains access, travel, utility, and storm water rights.

Harrison Middle School and Winslow Fields (Map 10 Lot 4)

This approximately 42 acre lot is part of the McCartney St complex that includes the Middle School, Yarmouth Elementary School, and Superintendents Office, all with related parking and playground areas, a storage building (built 2007) for maintenance equipment and parks/recreation storage, as well as Winslow fields and tennis courts, and pedestrian trails from both West Elm Street and the Oakwoods subdivision. The complex is bisected by McCartney St and the "paper street" extension to Hillside St thereof. This

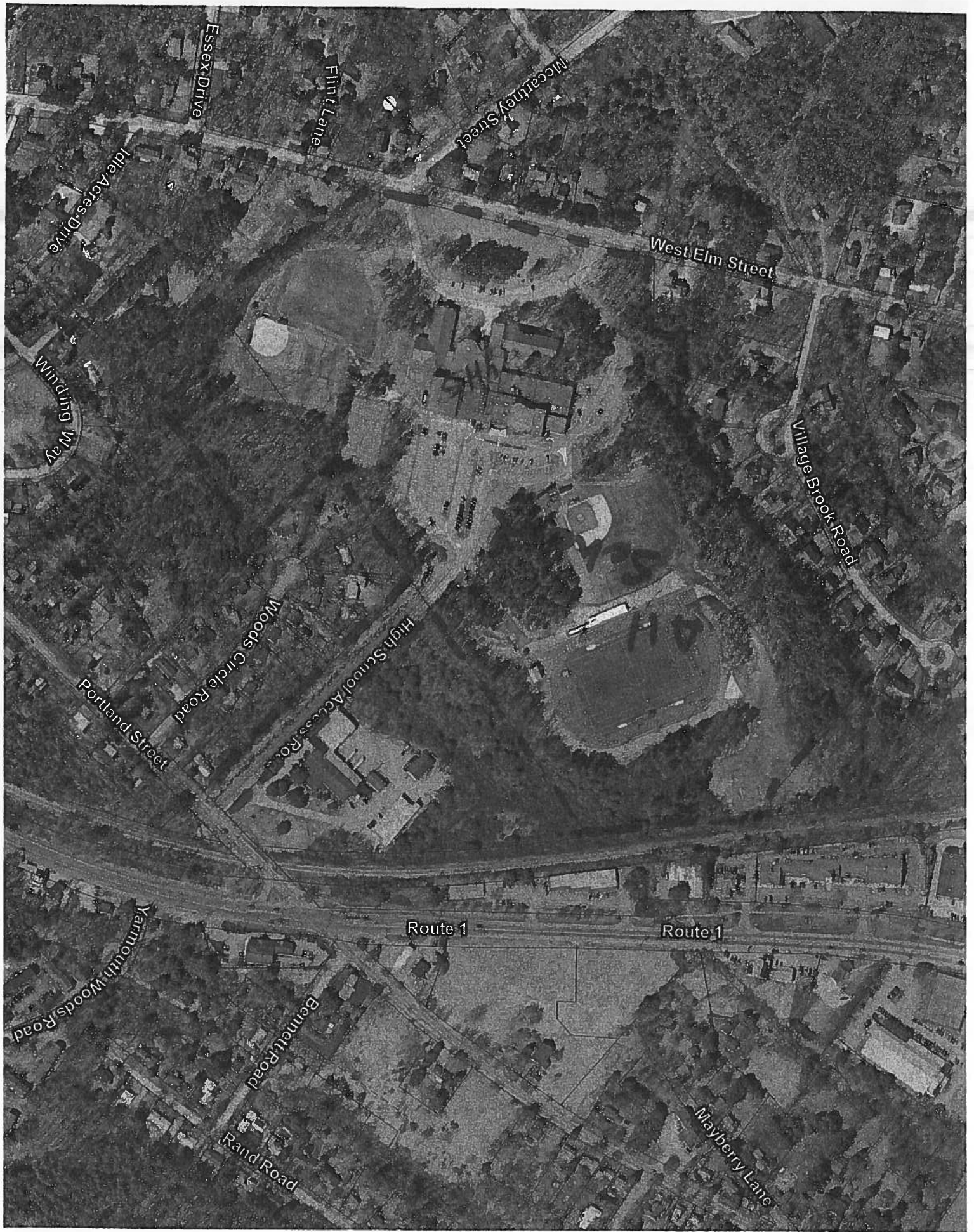
proposed division of assets includes dividing Map 10 Lot 4 into two parcels. The dividing line would be the existing edge of the woods line along the northwesterly side of the Winslow Fields athletic areas. All lands south and easterly of said new dividing line shall designate the limits of the Winslow fields area including 3 soccer fields, a softball field, tennis courts, pond and wooded buffer along the southeasterly border (Glen Road) (guesstimated 23 acres). This property is shared use by both the Town (general public) and the schools. Lands to the northwesterly of the woods line are dedicated to the Harrison Middle School purposes (guesstimated 19 acres)

In addition, a small portion of Map 10 Lot 4 would be divided off to provide access to the new storage/maintenance structure constructed across the "paper street" extension of McCartney St on Map 36 Lot 38. The town retains access, travel, utility, and storm water rights; in addition, the property is subject to wetland protection and conservation easements granted to Royal River Conservation Trust.

See map and sketch, includes division of Map 36 Lot 38, as below)

Yarmouth Elementary School and Superintendent's Office: (Map 36 Lot 38)

This 21.5 acre parcel includes The Yarmouth Elementary School (YES), the Superintendents Office building, related parking and playground areas. The proposed treatment of this parcel is to divide it into 3 parcels. McCartney St and the northwesterly corner (guesstimate 5.5 acres) are dedicated for general municipal purposes, including a new park/recreation maintenance building and the "paper street" extension to Hillside Street. A portion (guesstimated 8 acres) of the southeasterly most end of the parcel would also be divided. This portion would include the walker's path from West Elm St., the Superintendents Office, and the upper portion of the shared parking area directly in front of the superintendents office building. Depending upon the future administrative needs of the Yarmouth School Department or successor administrative or educational district, the Superintendent's office may or may not be dedicated to school purposes. If not, the Town would assume possession of the office for Community Services or other municipal functions. The town retains access, travel, utility, and storm water rights; in addition, the property is subject to wetland protection and conservation easements granted to Royal River Conservation Trust.



Essex Drive

Flint Lane

McCauley Street

West Elm Street

Village Brook Road

Winding Way

Woods Circle Road

High School Access Road

Portland Street

Idle Acres Drive

Route 1

Route 1

Yarmouth Woods Road

Bennett Road

Rand Road

Mayberry Lane



McCartney Street

Rocks Blvd

Yes

H.S. School

Town

Hillside Street



Forest Falls Drive

Route 1

York Street

Route 1

School Street Ramp

Main Street

School Street

Pine St.



445
Supt

